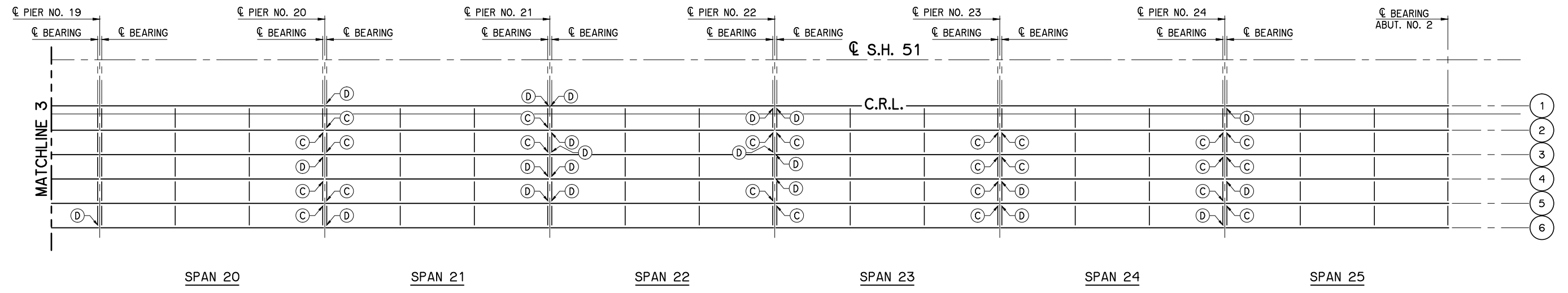
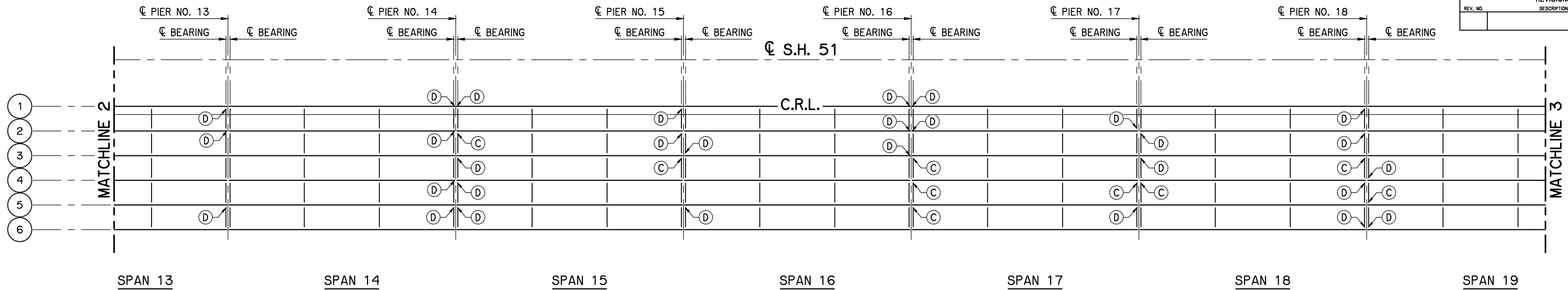
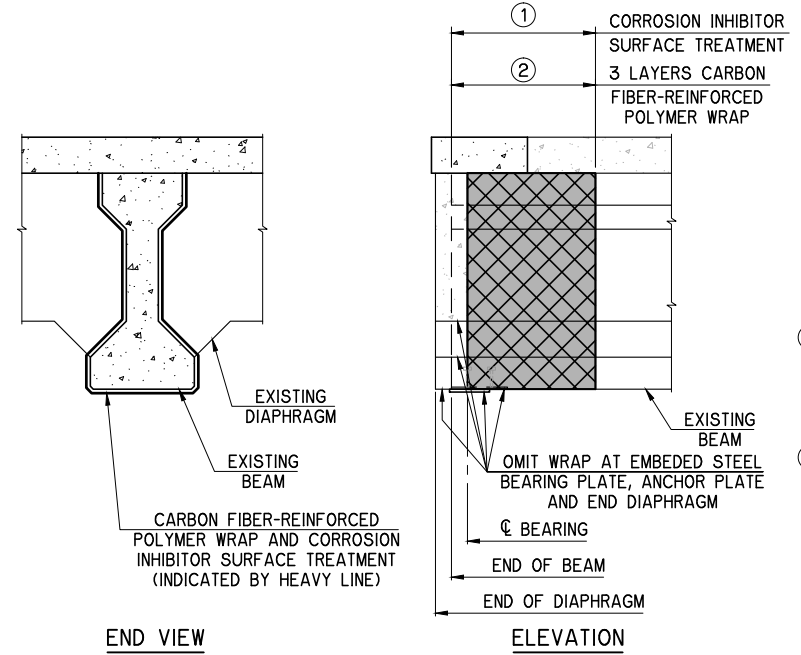


REVISIONS		
REV. NO.	DESCRIPTION	DATE



**BEAM REPAIR PLAN**



- NOTES:**  
FOR PNEUMATICALLY PLACED MORTAR DETAIL, SEE SHEET 27.  
FOR CARBON FIBER-REINFORCED POLYMER WRAP AND CORROSION INHIBITOR, SEE PRECAST BEAM REPAIR DETAIL.
- FOR PRECAST BEAM ENDS REQUIRING REPAIR, APPLY CORROSION INHIBITOR TO THE EXPOSED ENDS OF BEAMS, SIDES, AND BOTTOM, AS SHOWN, PRIOR TO APPLICATION OF CARBON FIBER-REINFORCED POLYMER WRAP. SEE SHEET 32 AND THIS SHEET, FOR LOCATIONS AND LENGTHS OF REPAIRS.
  - APPLY CARBON FIBER-REINFORCED POLYMER WRAP IN THREE (3) LAYERS. APPLY FIRST AND THIRD LAYERS IN A HORIZONTAL PATTERN, THE SECOND LAYER IN A VERTICAL PATTERN.

**DETAIL LEGEND**

	CORROSION INHIBITOR SURFACE TREATMENT
	CARBON FIBER-REINFORCED POLYMER WRAP

- PLAN LEGEND**
- |   |   |
|---|---|
| <b>(B)</b> 3'-0" BEAM END REPAIR WITH CARBON FIBER-REINFORCED POLYMER WRAP AND CORROSION INHIBITOR AND 0.2 S.Y. DIAPHRAGM END REPAIR WITH PNEUMATICALLY PLACED MORTAR.                      | <b>(D)</b> 2'-0" BEAM END REPAIR WITH CARBON FIBER-REINFORCED POLYMER WRAP AND CORROSION INHIBITOR AND 0.1 S.Y. DIAPHRAGM END REPAIR WITH PNEUMATICALLY PLACED MORTAR.                      |
| <b>(C)</b> 3'-0" BEAM END REPAIR WITH CARBON FIBER-REINFORCED POLYMER WRAP AND CORROSION INHIBITOR AND 0.2 S.Y. DIAPHRAGM END REPAIR ON EACH SIDE OF BEAM WITH PNEUMATICALLY PLACED MORTAR. | <b>(E)</b> 2'-0" BEAM END REPAIR WITH CARBON FIBER-REINFORCED POLYMER WRAP AND CORROSION INHIBITOR AND 0.1 S.Y. DIAPHRAGM END REPAIR ON EACH SIDE OF BEAM WITH PNEUMATICALLY PLACED MORTAR. |

SH 51 NB OVER ARKANSAS RIVER		TULSA COUNTY	
<b>BEAM REPAIR PLAN</b> SHEET 2 OF 2		Design	ADT
		Detail	FEZ
		Check	ADT
<b>STATE OF OKLAHOMA</b>		WHITE ENGINEERING ASSOCIATES	
		DEPARTMENT OF TRANSPORTATION	
JOB PIECE NO. 31358(04)		SHEET NO. 33	

I:\Active\1626\Drawings\33 Beam Plan 2 of 2.dwg, 6/12/2017 11:29:43 AM, Fred